

RXW60GW16B-1616W

Wall washer Flexible strip 1616-Cardan bending-16W/m

Feature:

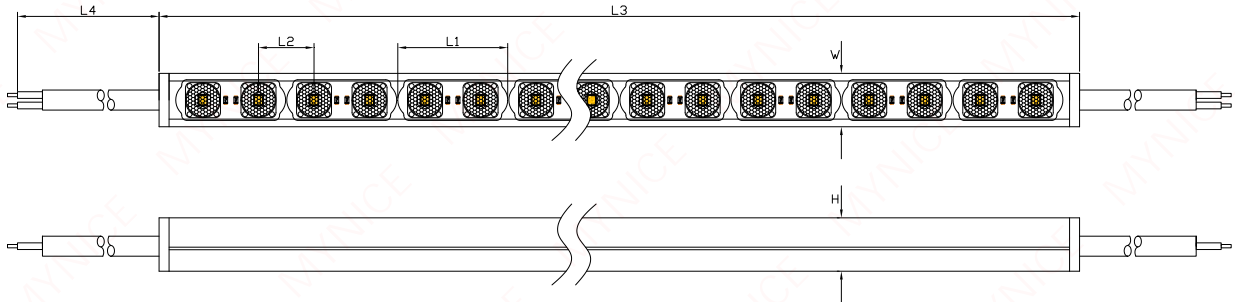


- Multiple optical LENS options are suitable for varying lighting environments.
- Innovative design with optical LED module + integrated extrusion silicone tube, allowing for top bending and side bending direction in the meanwhile to meet 3D viewing effect.
- With excellent weather resistance, it can maintain stable softness when working under the temperature of -20°C~+45°C, anti-brittle, anti-deformed, anti-softened, long lifetime.
- IP65 waterproof, multiple protection advantages, resistance to salt liquids, acids and alkalis. anti-corrosive gases, fireproofing, anti-UV resistance.

Technical Specifications:				Symbol	CCT	Flux Lm/m
Rated Power	16W/m	IK	IK05	●	2700K	1280
Rated Voltage	DC24V	IP	IP65	●	3000K	1310
LED Qty.	60LED/m			●	4000K	1360
LED Package	SMD2835			●	5000K	1350
Colour/Ra	Ra>90			●	6000K	1350
Beam Angle	30°/60°			●	R	
SDCM	3/5SDCM			●	G	
Operating Temp.	-20~45°C			●	B	
Storage Temp.	-20~60°C			●	W	
Lifespan	>50, 000h			●	RGB/RGBW	

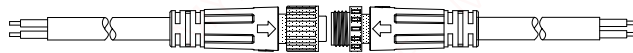
※The above power lumen data is based on the measurement results when the product length is 1 meter and the color temperature is 4000K, with a measurement deviation of ±10%.

Product Size:



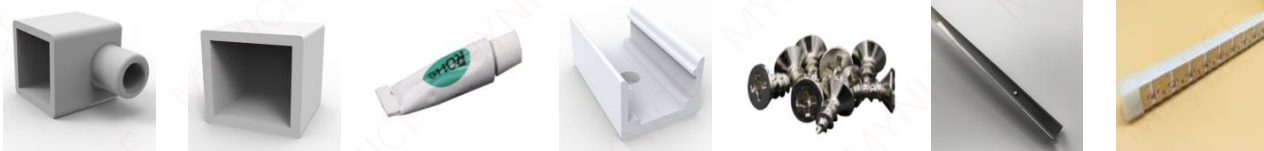
						Units: mm
Code	Cut/L1	Distance/L2	Length/L3	Cable/L4	Width/W	Height/H
Value	33.33	16.67	5010	200	16.5	16.5
Tolerance	±1	±1	±20	±10	±1	±1

Waterproof Connector:



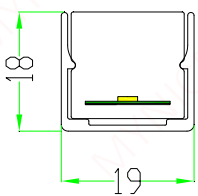
※Optional, The figure is for reference only

Accessory Information:

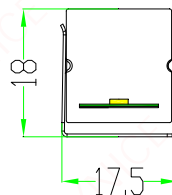
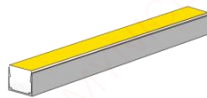


End Cap 1pcs/Reel	End Cap 1pcs/Reel	Glue 1pcs/Reel	Clips 3pcs/m	Screw 3pcs/m	Alum. carrier Optional	Mold able carrier Optional
----------------------	----------------------	-------------------	-----------------	-----------------	---------------------------	-------------------------------

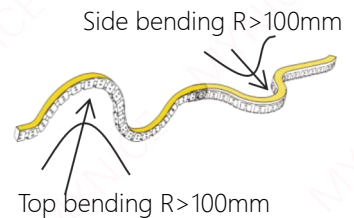
Mounting Dimensions:



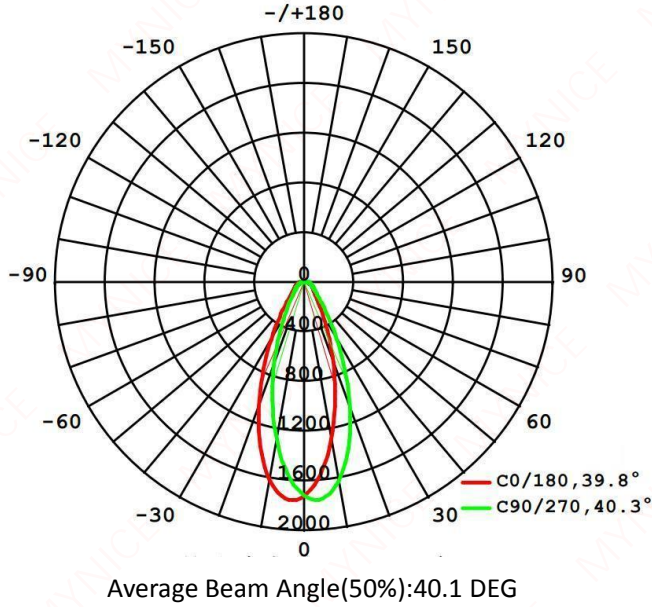
Clips & Alum. Carrier



Mold able Carrier



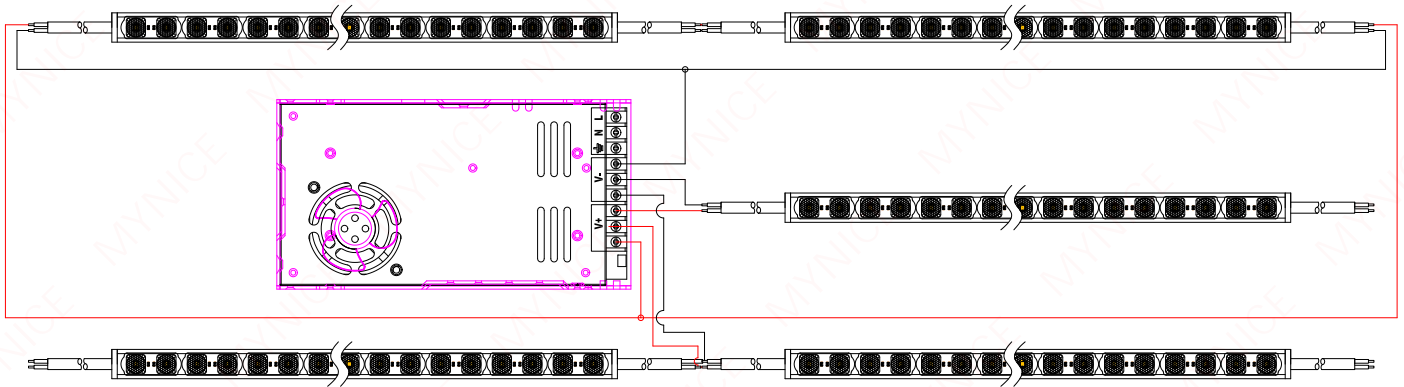
Luminous Intensity Distribution Diagram:



Packaging Information :

Net weight (g)	Inner box size (cm)/weight (kg)	Qty PCS/CTN	Carton Size(cm)/GW.(kg)
250g/m*5m/PCS	L425*W425*H45mm	5boxes*2PCS*5M	L455*W250*H443mm
1250g/PCS	3kg	50m	16.5kg

Electric Diagram:



Cautions:

- Installation of LED modules (with power supplies) needs to be made under consideration of all valid regulations and norms.
- Installation by qualified electrician only.
- Please drive the led strip with isolated power, and the ripple of the constant voltage source should be less than 5%.
- Please do not bend the strip into an arc with a diameter less than 20mm to ensure the longevity and reliability.
- Do not fold it in case any damage of LED beads.
- Do not pull the power wire hard to ensure the longevity. Any crash may damage the colloidal surface is prohibited.
- Please make sure the wire is connected to the anode and cathode correctly. The power output should be consistent with the voltage of the strip to avoid damage.
- LED lights should be stored in dry, sealed environment. Please only unpack it before usage. Ambient temperature: -20 °C ~ + 45 °C. Storage temperature: -25 °C ~ + 60 °C/60%RH.
- Please use the strips without waterproof within indoor environment with humidity less than 70%.
- Please be careful during operation. Do not touch the AC power supply in case of electric shock.
- Please leave at least 20% power for the power supply during using to ensure there is enough power supply to drive the product.
- Do not use any acid or alkaline adhesives to fix the product (e.g.: glass cement).
- The joints of extended strips should be deal with waterproof when using waterproof products.